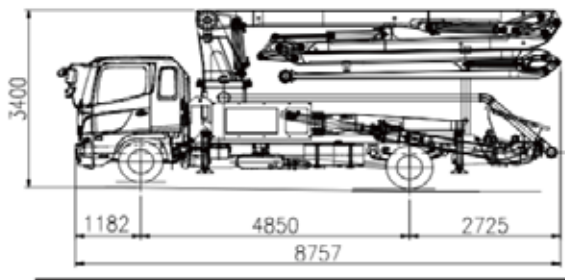


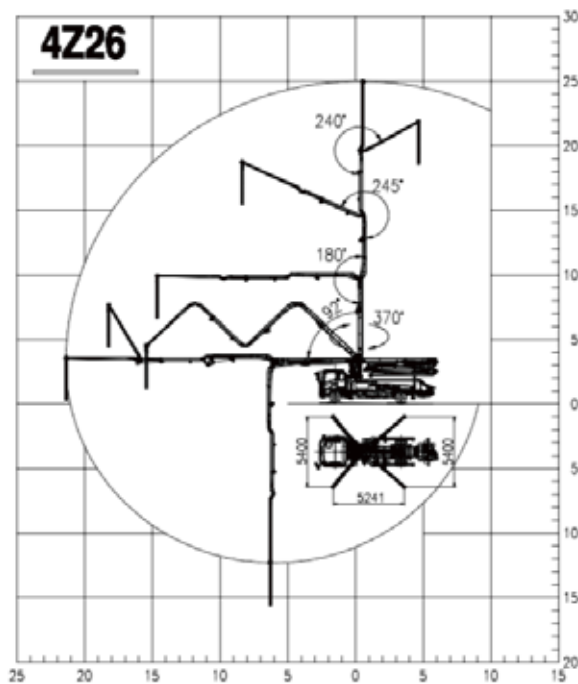
4Z26H

SPECIFICATIONS

■ DIMENSIONS



■ WORKING RANGE



■ BOOM

Boom type	4-section Z-Boom
Vertical reach	25.2m
Horizontal reach	21.2m
End hose length	4m
Delivery pipe diameter	125mm(5")
Slewing range	370°
1st section articulation	92°
2nd section articulation	180°
3rd section articulation	245°
4th section articulation	240°
1st section length	6,300mm
2nd section length	5,000mm
3rd section length	5,000mm
4th section length	4,900mm

■ OUTRIGGER

Front Outrigger Type	One Stage Diagonal Extension Full Spread Width 5,400mm
Rear Outrigger Type	One Stage Swing-out Full Spread Width 5,400mm

■ PUMP SPECIFICATIONS

Maximum output	110 m ³ /h
Concrete cylinder	Φ230 × 1400mm
Stroke per minute	32
Concrete pressure	70bar
Hopper Capacity	600Liter
S-Valve	Φ230 × Φ180
Main pump	A4VG180 × 1